

SCHÜTZ

news

ENERGY SYSTEMS

- 27 **Ceiling temperature control** for a pleasant indoor climate – at any time of year

INDUSTRIAL SERVICES

- 28 SCHÜTZ invests in a **second slitting line in Siershahn**

COMPANY

- 32 Udo Schütz **honoured with the Rudolf Diesel Medal** for “Most Sustainable Innovation Achievement”

PACKAGING SYSTEMS

SCHÜTZ INTRODUCES A NEW PLASTIC FRAME PALLET FOR IBCS

4



COMPANY

A wide range of **vocational training options** with glowing prospects

42



Contents

PACKAGING SYSTEMS

- 4 SCHÜTZ introduces a new plastic frame pallet for IBCs
- 10 Our Selters site has again received BAM test centre accreditation
- 14 Industry meet-ups in Nuremberg and Gothenburg: A review of the trade fair highlights of the year
- 20 Maximum stability at any angle: SCHÜTZ DRUMFIX securely fixes steel tight-head steel drums
- 22 SCHÜTZ VASITEX supports CO₂ reduction in South America

ENERGY SYSTEMS

- 24 A new showroom presents refurbishment systems in a real apartment
- 27 Ceiling temperature control for a pleasant indoor climate – at any time of year

INDUSTRIAL SERVICES

- 28 More flexibility thanks to higher capacities: SCHÜTZ invests in a second slitting line in Siershahn

COMPOSITES

- 31 SCHÜTZ at JEC WORLD 2025

COMPANY

- 32 Udo Schütz honoured with the Rudolf Diesel Medal for "Most Sustainable Innovation Achievement"
- 36 Team spirit, exercise and community: our sporting year 2024
- 40 SCHÜTZ has been driving smoothly with Autohaus Krah for 40 years
- 42 A wide range of vocational training options with glowing prospects
- 46 Celebrating loyalty: SCHÜTZ honours 71 long-standing employees

10

New accreditation and greater testing scope: the German Federal Institute for Materials Research and Testing (BAM) has renewed recognition of our Selters site as a test centre. Additional accreditation to perform product tests means faster approvals.



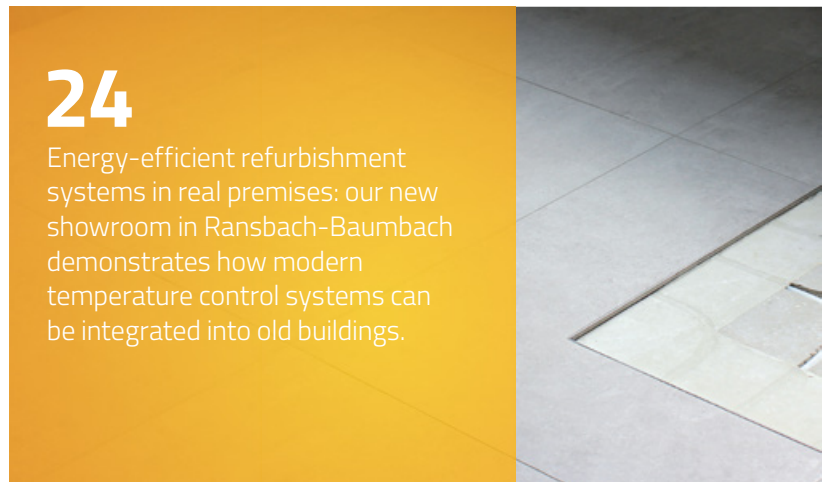
14

Trade fair highlights in Nuremberg and Gothenburg: Fachpack and Scanpack were excellent opportunities to discuss developments and trends in the packaging industry and present our new solutions.



24

Energy-efficient refurbishment systems in real premises: our new showroom in Ransbach-Baumbach demonstrates how modern temperature control systems can be integrated into old buildings.





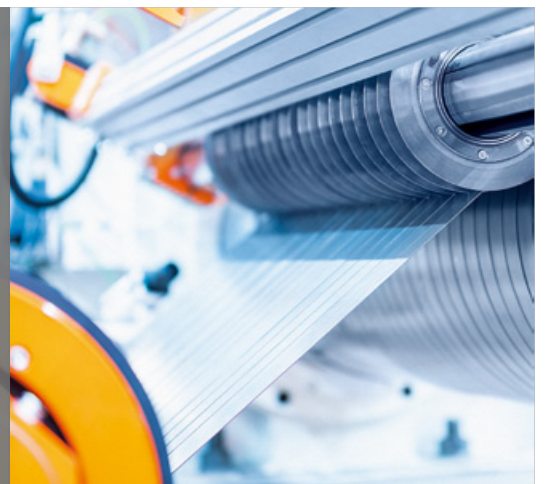
42

SCHÜTZ is committed to promoting young talent and offering a wide range of career opportunities. In July, 19 graduates from various training areas were honoured at a ceremony.



28

More flexible order processing and even better supply security: our Steel Service Centre in Siershahn has been expanded to include a second slitting line and a new packaging line.



IMPRINT

Editor: Schütz GmbH & Co. KGaA
 Schützstraße 12, D-56242 Selters
 Phone: +49 2626 77 0, E-mail: info1@schuetz.net
 www.schuetz.net

Editorial office: Schütz Corporate Marketing (Veit Enders, Melanie Ivelo)

Text: additiv pr GmbH & Co. KG (Marius Schenkelberg), www.additiv-pr.de
 Sage & Schreibe Public Relations GmbH
 (Christoph Jutz, Stephan Hanken), www.sage-schreibe.de

Design: Bauch & Müller Werbeagentur GmbH, www.bauch-mueller.de

Print: Druckerei Corzilius e.K., www.corzilius-mediencenter.de

Picture copyright: www.shutterstock.com

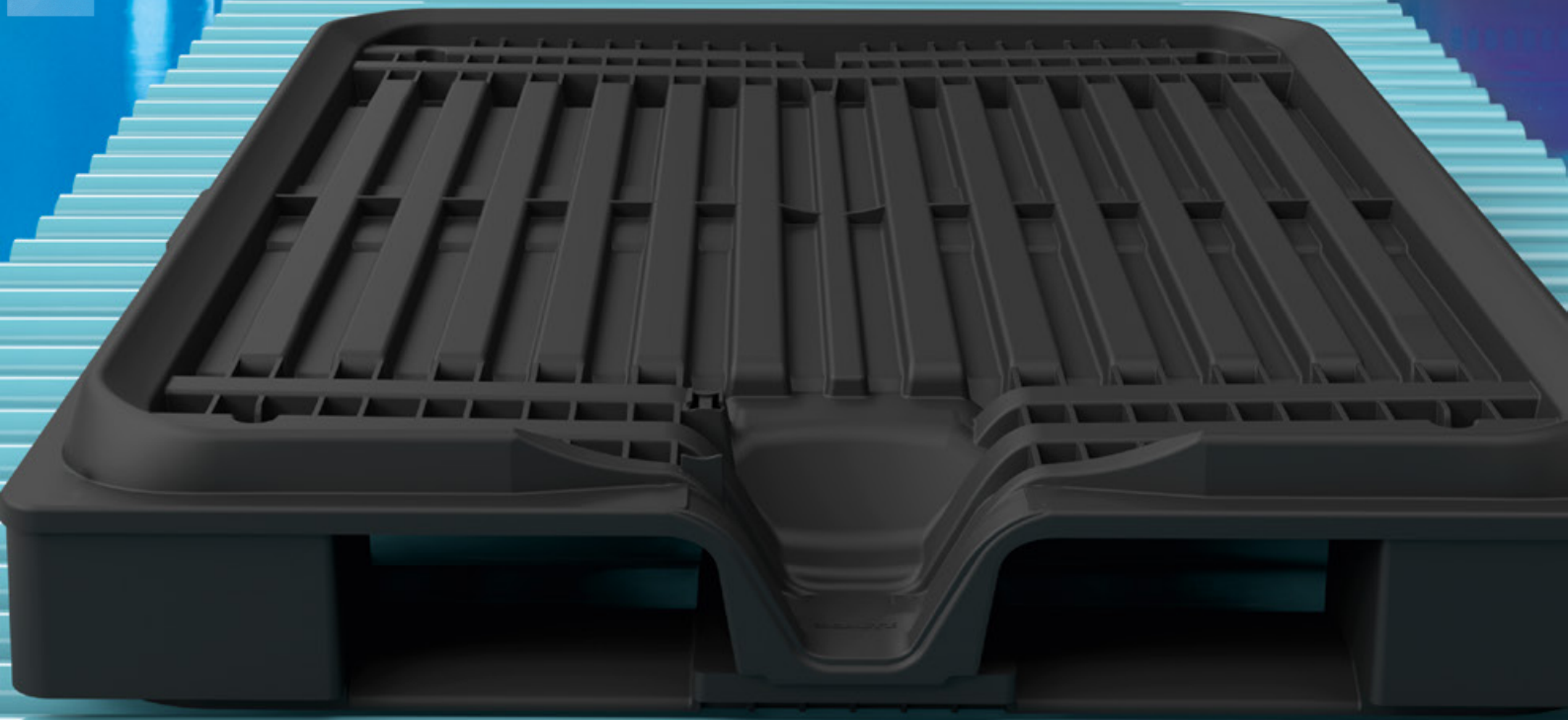
SCHÜTZ introduces a NEW plastic frame pallet for IBCs

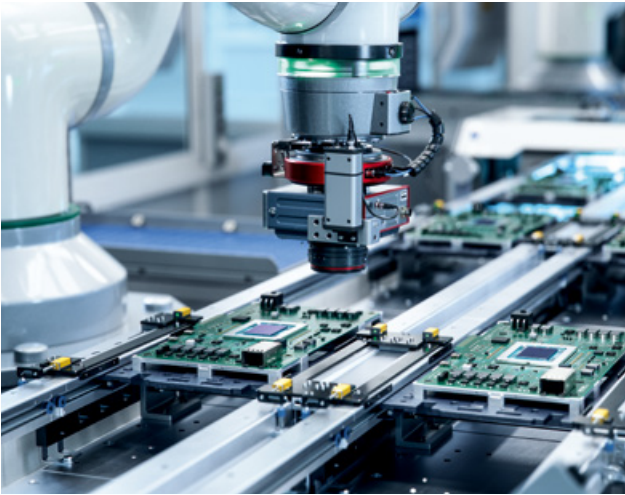
As part of the continuous optimisation of its packaging solutions, SCHÜTZ is launching a new pallet for IBCs. The plastic frame pallet has been specially developed for use with automated conveyor technology. It is made from recycled material produced by SCHÜTZ and is extremely robust, UN-certified and suitable for a wide range of applications. As it can be reused multiple times with the appropriate reconditioning, the new pallet is also exceptionally sustainable.

To meet the requirements of modern supply chains, we are committed to continuously refining all components used in our IBC composite packaging. For example, the variants in our ECOBULK series can be optimally adapted to the diverse requirements of different applications. An IBC is always the sum of its parts, and so the configuration of the pallet also plays a key role in maximising economic and ecological efficiency in the supply chain.

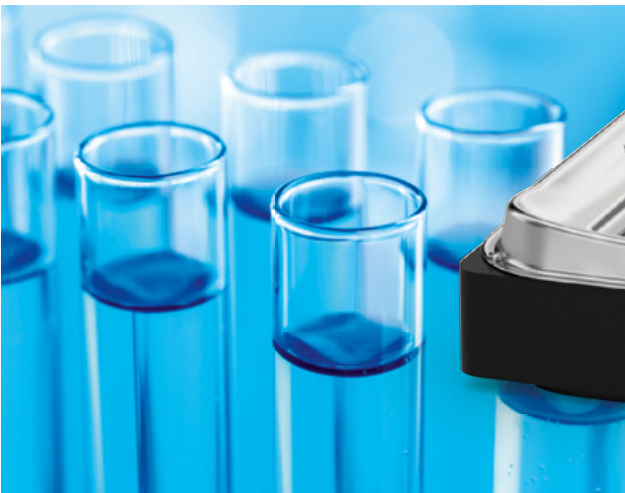
MAXIMUM
STABILITY
EXTREME

MOBILITY
DESIGNED FOR
CIRCULARITY





Plastic and full plastic pallets are increasingly being used in applications with particularly high hygiene and safety requirements, such as in the food industry or for chemicals in the semiconductor industry.



We offer a wide range of configuration options and advise our customers on picking the ideal solution for their needs.

There are two basic pallet types: frame and skid pallets, and these can be made of steel, plastic and sometimes wood. When picking the right pallet, a number of criteria should be considered, including the specific properties of the filling products, legal framework conditions and any specific industry requirements. Our customer advisors also take into account individual transport routes and conveyor systems as well as handling and storage conditions.

The standard version of these pallets consist of plastic skids, which we manufacture using our own injection moulding process, and a steel bottom plate. In the full plastic version, the steel bottom plate is replaced by a plastic bottom plate.



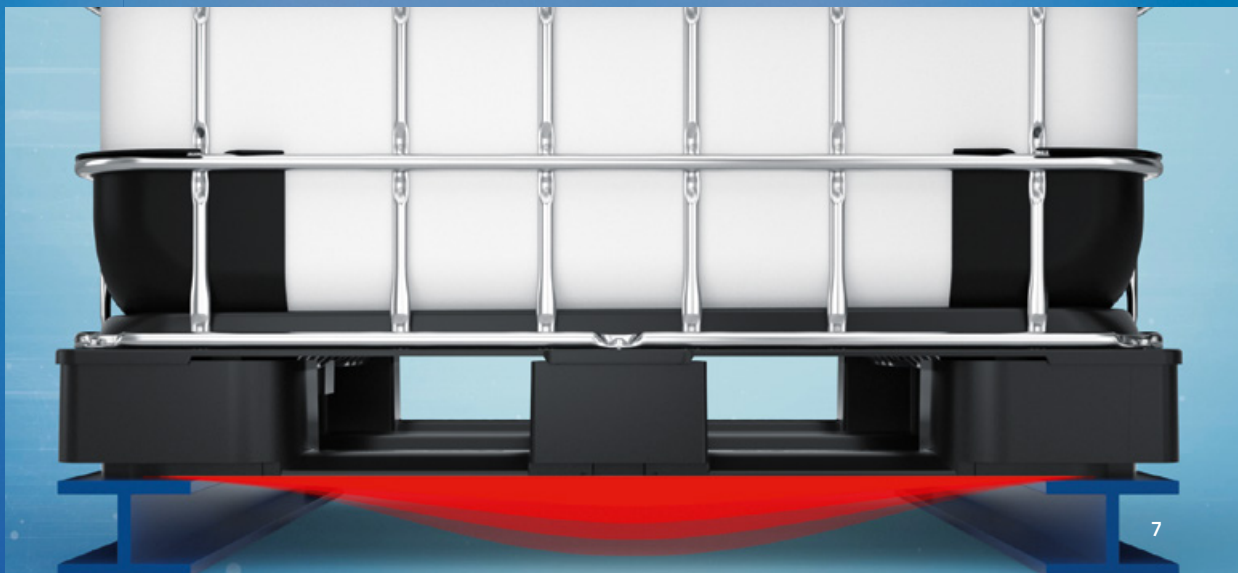
SCHÜTZ has developed a completely new plastic frame pallet especially for use in automated warehouses. Thanks to its special geometry, it is particularly suitable for horizontal transport on conveyor belts and handling in fully automated high-bay warehouses.

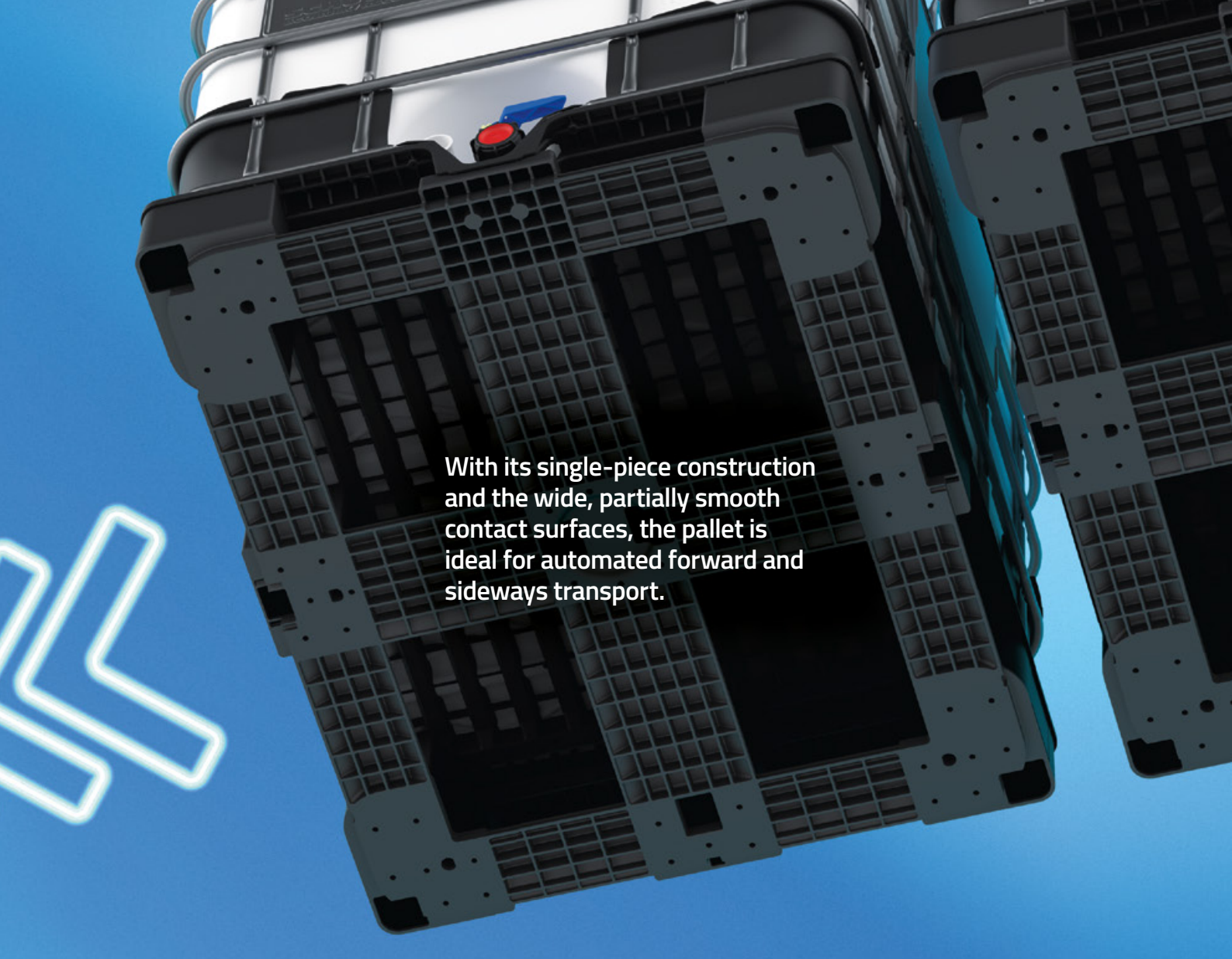
Plastic and full plastic pallets are increasingly being used in applications with particularly high hygiene and safety requirements, such as in the food industry or for chemicals in the semiconductor industry. The standard versions of these pallets consist of plastic skids, which we manufacture using our own injection moulding process, and a steel bottom plate. In the full plastic version, the steel bottom plate is replaced by a plastic bottom plate.



Monoblock design provides maximum stability

SCHÜTZ has developed a completely new plastic frame pallet especially for use in automated warehouses. Thanks to its special geometry, it is particularly suitable for horizontal transport on conveyor belts and handling in fully automated high-bay warehouses. The pallet is produced using state-of-the-art manufacturing technology in the company's own injection moulding plant. **The packaging solution features an innovative monoblock design which offers numerous advantages such as high stability, robustness and durability.**



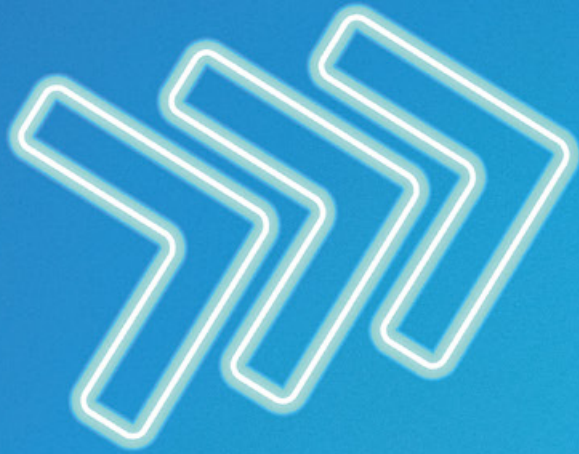


With its single-piece construction and the wide, partially smooth contact surfaces, the pallet is ideal for automated forward and sideways transport.

With its single-piece construction and the wide, partially smooth contact surfaces, the pallet is ideal for automated forward and sideways transport. **On roller conveyors or chain-driven conveyors, the plastic frame pallet enables a smooth horizontal movement, meaning that IBCs can be transported forwards and sideways safely and without jamming, regardless of whether it is used on roller conveyors or chain-driven conveyor belts.** In addition, the pallet can also be used for vertical transport, as it only has minimal deflection on the underside when lifting and lowering filled IBCs. With its particularly robust and stable substructure, the pallet is also suitable for transporting larger loads. **This also makes it ideal for static storage in high-bay warehouses, where often IBC pallets are used that have a complex design or are made of materials that cannot be reused frequently.**



The pallet can also be easily lifted from all sides. The IBCs equipped with the new pallet have optional hazardous goods approval and are also available with a full plastic frame pallet where the bottom plate is also made of plastic.



The plastic frame pallet also makes an important contribution to improving the carbon footprint. We use high-quality plastic recycle which we manufacture ourselves, obtained when used industrial packaging is processed and reconditioned in our own recycling centre using emptied packaging collected worldwide through the SCHÜTZ TICKET SERVICE. This means that the material can be reused many times over. Compared to a conventional steel frame pallet, the new pallet design saves up to 64.8 kg of CO₂ thanks to the lower steel content and the use of a full plastic frame pallet made with recycled material.



Our Technical Customer Service (TCS) supports customers with advice on all technical issues relating to packaging systems. For example, our team works closely with customers to help them select the ideal packaging solution for their specific requirements. The many different types of pallets play an important role here. TCS will help customers select the optimum pallet for a specific transport task.

If you have any questions, the SCHÜTZ Technical Customer Service team will be happy to help: tcs@schuetz.net

Our Selters site has again received BAM test centre accreditation

The SCHÜTZ test laboratory at the Selters site is used to carry out product tests to ensure maximum safety and product quality. As part of a recent audit, the German Federal Institute for Materials Research and Testing (BAM) renewed its accreditation as a testing laboratory. This renewal underscores the institute's full confidence in SCHÜTZ's comprehensive expertise, state-of-the-art equipment and our ability to carry out product tests for hazardous goods packaging. In addition to the renewed accreditation, the range of tests we can perform has also been expanded.

With immediate effect, we are authorized to carry out product tests with standard liquids for IBCs, drums and jerrycans.

This gives our customers the decisive advantage that we can carry out all important tests quickly and efficiently directly in our in-house laboratory, thus significantly speeding up type testing and packaging approval processes. SCHÜTZ fulfils all the requirements of this strict regulation. In addition to regular auditing by BAM, our strengths include state-of-the-art testing procedures and many years of expertise in the field of material and packaging testing.

Testing packaging with standard liquids requires the building and the equipment to comply with strict guidelines. These will be met with the completion and relocation to the new SCHÜTZ laboratory in 2020: the laboratory's comprehensive equipment, including facilities for leak, internal pressure, drop, stack pressure and vibration tests, guarantees the highest testing standards.

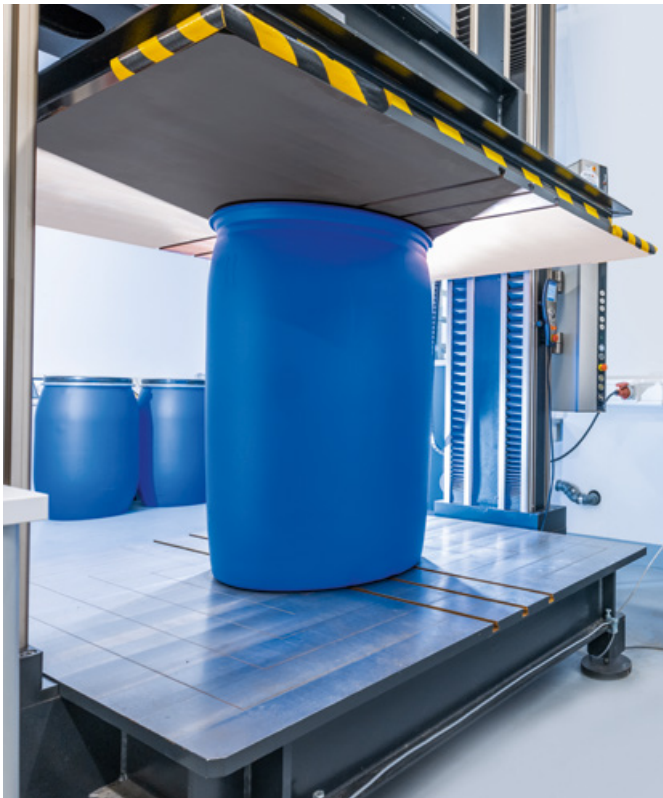


BAM

Bundesanstalt für
Materialforschung
und -prüfung

The transportation of dangerous goods by road, rail and inland waterways is regulated in Germany by the Ordinance on the Transport of Dangerous Goods by Road, Rail and Inland Waterways (GGVSEB). Packaging for the transportation of dangerous goods

must generally be approved by an authority with the relevant powers. The Federal Institute for Materials Research and Testing, BAM for short, is responsible for issuing these approvals in Germany. As a rule, all manufacturers of packaging, bulk packaging or bulk packaging materials must have their quality assurance programme approved by BAM and undergo regular production monitoring by BAM or BAM-approved production auditors.

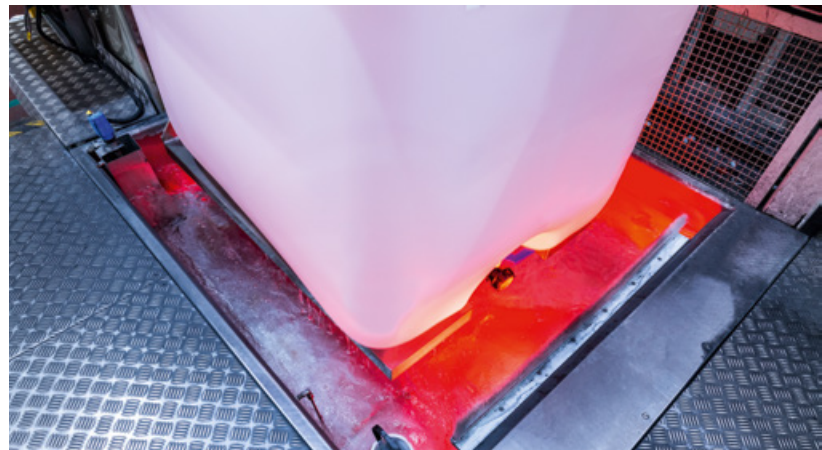


The laboratory's comprehensive equipment, including facilities for leak, internal pressure, drop, stack pressure and vibration tests, guarantees the highest testing standards.



Further requirements for the practical suitability tests are:

- » Cold chambers for pre-storage at -18°C and heating chambers up to 40°C .
- » Options for pre-storage and testing with standard fluids.
- » Test containers for the storage of water-polluting, corrosive and flammable liquids in EX design with appropriate fire protection to ensure safety in the event of fire.
- » Ventilation systems and gas monitoring to prevent the accumulation of hazardous vapours.
- » Fire extinguishing systems with extinguishing water retention to ensure that the contaminated extinguishing water can be controlled and disposed of without harming the environment in the event of a fire.
- » In-process testing of plastic and steel components using a range of tensile testing equipment.



Tests during production

Our packaging is continuously tested during the different stages of production. This enables us to consistently demonstrate that we fulfil the requirements of our customers as well as all legal specifications and standards. SCHÜTZ is continually investing in the improvement and reliability of our tests. For example, we have replaced manual measuring equipment or visual inspections, which depend largely on the experience and skill of the employees, with automated inspections. **Non-contact measuring projectors, camera tests and thermographic measurements, each with automated evaluation, help to analyse the respective production results.**



State-of-the-art technology in use – CT scanner for in-depth analyses

In addition to the classic material tests for plastics, such as melt index and density, we can also carry out microscopic examinations to analyse damage. Since 2020, we have had our own CT scanners, which can be used to measure components with high precision. This technology can also be used to analyse details that are difficult to access, such as cavities or undercuts. This plays a key role in the continuous improvement of production quality and enables even more precise and efficient series monitoring.

Globally standardised SCHÜTZ SHEQ Management

Quality management has been a core concern at SCHÜTZ since the company was founded and is firmly established at all locations worldwide. Every production and management process at SCHÜTZ is structured, checked and certified in accordance with recognised external standards. We place the highest demands on our packaging, going far beyond the legal requirements.

We ensure that our products are manufactured to a consistently high quality at every location.

To monitor this, we have set up our own SHEQ management system, which guarantees standardised product and process quality at all locations. It sets out process and work instructions, test plans and other specifications in a standardised form. On this basis, all production sites work according to centralised specifications and guarantee uniform standards despite different local conditions.



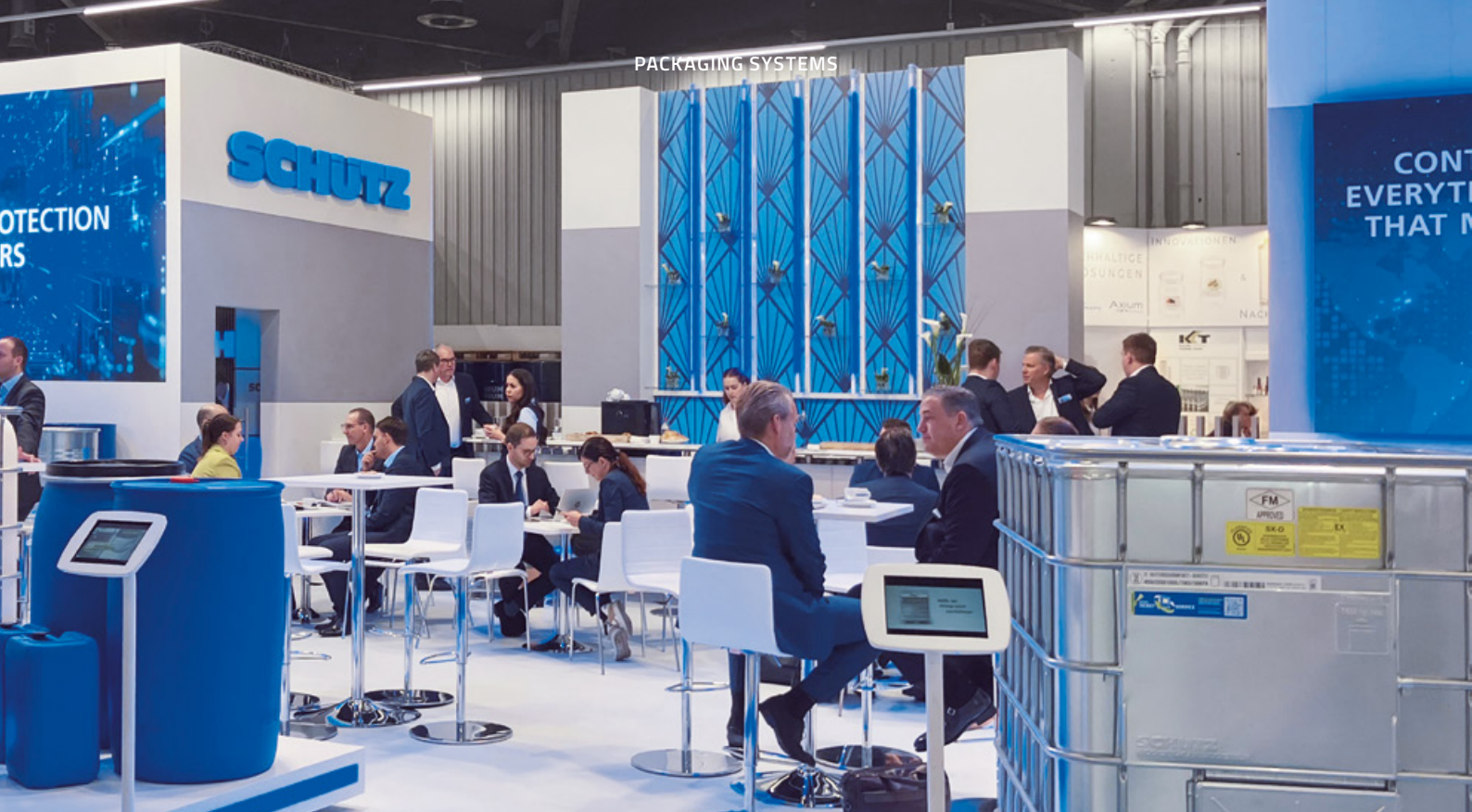
SCAN
PACK®

With almost 13,000 visitors and 400 exhibitors, Scanpack, the leading packaging trade fair in Scandinavia, celebrated its 60th anniversary at the beginning of October.



Industry meet-ups in Nuremberg and Gothenburg: **A review of the trade fair highlights of the year**

Focusing on customer needs is the central pillar in our corporate philosophy. Against this background, it is impossible to overstate how important regular trade fairs are for SCHÜTZ. This year's Fachpack followed by Scanpack were again excellent opportunities to meet customers face to face, discuss market developments and trends, exchange ideas and requirements and present new solutions.



FACHPACK 2024 >

Over 37,000 visitors, one in three from abroad, came to see which innovations in packaging, technology and processes the roughly 1,500 exhibitors were presenting.

Fachpack, which took place over three days in Nuremberg at the end of September, is one of the most important get-togethers for the European packaging industry. Over 37,000 visitors, one in three from abroad, came to see which innovations in packaging, technology and processes the roughly 1,500 exhibitors were presenting. The main theme of the show was “Transition in Packaging”, highlighting the need for

greater sustainability, regulatory changes and switching to new technologies in fields ranging from mechanical engineering to recycling. At the SCHÜTZ booth, we were more than happy to address all these topics and present our product and service solutions to the many visitors as part of our holistic concept entitled “Containing everything that matters”.

With almost 13,000 visitors and 400 exhibitors, Scanpack, the leading packaging trade fair in Scandinavia, celebrated its 60th anniversary at the beginning of October. As our Nordic subsidiary was founded 25 years ago at the same time, this was a wonderful opportunity to celebrate two anniversaries with our guests. **Visitor interest at our stand also focused on SCHÜTZ's product and process innovations, which help to minimise the ecological footprint of packaging and implement the requirements of the circular economy without compromising the quality or the safety of the packaging.**

At both trade fairs, as well as presenting our latest products, our aim was to demonstrate that it's the bigger picture that counts, and in an increasingly complex environment it is not expedient to focus solely on individual aspects. Application benefits, product safety, delivery reliability and ecological performance must all go hand in hand in order to offer customers true added value.



25
TWO
ANNIVERSARIES
AT ONCE!
60

It's time to celebrate!
We celebrated two
anniversaries with our
guests in Gothenburg.



A high-tech product: SCHÜTZ GREEN LAYER

Our high-performance plastic packaging with a high proportion of recycled material is the best example of how characteristics can be combined to provide outstanding performance. **Thanks to our decades of expertise in continuous extrusion blow moulding processes, we are able to offer superior technical solutions in which the recycled material is exclusively used for the middle layer of the container.** The filling product and the environment only come into contact with virgin material. However, the base material is also crucial for a high-quality end product, which is why we only use recyclate that we have obtained ourselves as part of our worldwide SCHÜTZ TICKET SERVICE, pre-selected according to the intended use and recycled using state-of-the-art processes.

This allows us to supply IBCs, plastic drums and PE jerrycans which, in the case of IBCs, contain up to 70% recycled plastic and can be used by the customer without requiring lengthy internal clearance because they have the same approvals, standard specifications and performance data as our new products.

For our GREEN LAYER products, we exclusively use recyclate obtained from our worldwide SCHÜTZ TICKET SERVICE, pre-graded according to the intended use and recycled using state-of-the-art processes.



Stable and sustainable – our new pallet variants

Our new 3-skid steel pallet and the new plastic frame pallet also stand out on account of their increased user benefits and optimum properties for the circular economy. Both pallets have very wide, smooth contact surfaces that are ideal for use on internal conveyor systems. The plastic frame version in particular, which is manufactured using an innovative monoblock process, can be transported in any direction – forwards, backwards and sideways – on chain or roller conveyors.

Thanks to their high degree of stability and robustness in daily use, the pallets are not only ideal for high-bay storage, they can also be reused frequently as a component in our high-quality Reco IBCs. The plastic frame pallet, which is be available worldwide from this autumn, helps to protect natural resources as it is made from material recycled by SCHÜTZ.



SCAN THE QR CODE
AND LEARN MORE ABOUT
OUR PRODUCT NEWS

Reimagining how steel and plastic can be combined

With our ECOBULK SX-D-OV and SCHÜTZ Combi steel drums, we show that even packaging that seems familiar at first glance can offer some surprising properties. **Both types of packaging consist of two independent containers made of steel and plastic which together offer double leakage protection and combine the strengths of the two materials in the best possible way.** Compared to other IBCs, the closed steel hull of the SX-D-OV provides greatly enhanced safety in the event of fire and minimises risks during storage and transport. The Combi drums have an integrated plastic inner liner which ensures greater cleanliness and protection for the filling product, as corrosion or chemical reactions caused by the product coming into contact with metal are avoided. Optionally, customers can also choose the innovative Laser steel drum as an outer shell.





3-skid steel pallet & plastic frame pallet: both pallets have very wide, smooth support surfaces that are ideal for use with internal conveyor systems.

We presented a new version of our integrated agitator system for the first time at Fachpack and Scanpack.



Trade fair debut: a new version of the SCHÜTZ IMPELLER

For the first time, we were able to present to our visitors at Fachpack and Scanpack a new version of our integrated agitator system. Unlike the standard version, this version does not have a cup agitator to homogenise the product inside the IBC. Instead, the new version features three flat, propeller-like blades. The benefit of the new design is that agitator drives with lower speeds or lower power can now be used to obtain the same excellent stirring results. This brings the benefits of the SCHÜTZ IMPELLER system to a wider range of customers and applications.

Another SCHÜTZ innovation that attracted a lot of interest from trade fair visitors was our DRUMFIX drum securing system. With just a few simple steps, the system transforms four steel tight-head drums and a pallet into a secure loading unit for transportation, thus helping to save packaging material and avoid the cost of expensive returnable systems. Visitors were also impressed by our solutions for smaller filling quantities. These included the ECOBULK MX 560 and our new SC1 jerrycan series, which for the first time combines the highest SCHÜTZ quality and performance in packaging volumes starting from 5 litres.

FAIR



EUROPEAN
COATINGS SHOW

ADHESIVES – SEALANTS – CONSTRUCTION CHEMICALS

25 – 27 MARCH 2025
MESSE NÜRNBERG
HALL 4 | BOOTH 4-356



Maximum
stability at
any angle:

SCHÜTZ DRUMFIX securely fixes steel tight-head steel drums

Good packaging is important when transporting products. However, to ensure that a product arrives at its destination in perfect condition, it is crucial that the packaging is also correctly loaded and secured during transport. With this in mind, SCHÜTZ has developed the new SCHÜTZ DRUMFIX load securing system in accordance with the European standard for load securing, EUMOS 40509. The new set reliably secures four steel drums per pallet – even at inclinations of 45°. Made from glass fibre-reinforced, recycled plastic, the DRUMFIX elements are both cost-effective and ecofriendly.

Secured, even under the most difficult transport conditions: this was SCHÜTZ's brief for the design of our innovative securing system for steel tight-head drums. Each load unit, consisting of four steel tight-head drums, that is created with our SCHÜTZ DRUMFIX system absorbs all horizontal forces and is optimally secured. Once the drums are centred on the pallet, the DRUMFIX elements are slid into place over the adjoining lower drum seams and are then firmly secured to the pallet between two drums in just a few seconds using special screws.



One screw per element is sufficient for filling goods with a density of up to 1.2. A second screw hole on each DRUMFIX element provides even more stability for denser media, when transporting on CP3 pallets or in applications where heightened security is required.

Two additional straps at the top and bottom also ensure that the drums cannot slip or tip over.

Would you like to learn more about how the system works and how to use it? Simply scan the QR code and watch the application video online:



Unpacked quickly and safely, disposed of sustainably

Once they have arrived at their destination, the load units can be dismantled just as quickly and easily. First the two straps are removed, then the screws and the DRUMFIX elements. This simple process also offers advantages for the unpacker, who does not have to handle long straps or steel brackets, which can pose a risk of injury. On top of this, unpacking is made extra easy as there is no additional outer packaging such as film and other pallets to be disposed of, and neither is there a complex reusable system with expensive straps and metal brackets.

The DRUMFIX system was designed as a disposable system; however, it can be reused as often as required if undamaged. Customers can simply return elements that are no longer needed along with empty packaging to the SCHÜTZ TICKET SERVICE. We reuse the recycled plastic within our material cycle, working together with our customers to save valuable resources and reduce CO₂ emissions.

Securely fixed even at extreme inclinations

The DRUMFIX system fulfils all legal requirements and international standards for load securing, including the European standard EUMOS 40509. Full 360° protection guarantees the integrity of the load unit against all horizontal movement forces that occur during transport. Our DRUMFIX system remains stable even under extreme test conditions, such as under emergency braking or when the pallet is tilted by up to 45°. Another plus: the load units remain fully transportable and can be easy stacked.

Depending on customer requirements, SCHÜTZ supplies secured, ready-to-fill load units ex-works – with bungs aligned according to specifications – or sets for self-assembly. A packaging unit contains eight sets with a matching bit attachment and operating instructions.



1st Sustainability and Logistic Reverse Meeting: SCHÜTZ VASITEX supports CO₂ reduction in South America

To help ensure a sustainable future, our Brazilian subsidiary SCHÜTZ VASITEX is working with its customers in South America to reduce CO₂ emissions from industrial packaging. The collection, emptying and recycling of industrial and hazardous goods packaging by the free SCHÜTZ TICKET SERVICE forms the central element in this mission. On August 14, as part of the 1st Sustainability and Logistic Reverse Meeting initiated by SCHÜTZ VASITEX, businesses that have made a special contribution to environmental management and returning their IBC packaging were honoured.



From the left: Clovis Vendramini Kitahara (SCHÜTZ VASITEX), Alexandre Apanavícius (Veolia)



Luiz Francisco da Cunha,
CEO of SCHÜTZ VASITEX

“The companies honoured at the event saved a combined total of more than 30,000 tons of CO₂ by 2023. This shows just what an important role the collection and recycling of industrial packaging plays for sustainable business development, and it marks a key milestone on our way to a better environment for future generations.”

As well as the award ceremony, the event offered further programme highlights. Marcos Iorio, Deputy Director of the Science Centre for the Development of the Circular Economy, provided an overview of the key trends and practices of the circular economy. Professor Dr Fabricio Soler, UN consultant and expert on waste law, environmental law and ESG, answered questions on sustainability legislation and regulation. The global perspective provided valuable ideas for the expansion of the circular economy on the South American continent.

In this region, sustainability is a multi-layered concept that combines ecological, social and economic aspects, with environmental protection, social justice and economic stability taking centre stage. Compared to other countries, recycling rates in South America are still low. When it comes to



Since 2003, SCHÜTZ VASITEX has helped to reduce CO₂ emissions by more than 440,000 tonnes, which is equivalent to planting 20 million trees in an area ten times the size of Belo Horizonte, the sixth largest city in Brazil.



From the left: Luiz Francisco da Cunha (SCHÜTZ VASITEX), Marcos Ribeiro (Solenis), Marcelo Castrignano (Solenis)

recycling plastic waste, Brazil is a pioneer on the continent with a recycling rate of 25%. This success is due in part to government initiatives, private investment and the work of informal waste collectors.

The promotion of a circular economy and a commitment to sustainability in the production of industrial packaging have always been important cornerstones in SCHÜTZ's corporate philosophy.

With over 100 engineers at the SCHÜTZ Group headquarters in Selters, Germany and many specialists dedicated to researching how to optimise product performance, the technology leader is synonymous with intelligent packaging solutions. SCHÜTZ VASITEX has set itself the goal of contributing to Brazil's circular economy. The backbone of these sustainability measures is the SCHÜTZ TICKET SERVICE, the world's only manufacturer-operated system for collecting and recycling packaging. In Brazil, for example, collections can be booked nationwide for quantities of ten and more emptied IBCs. This has proved to be a recipe for success: since 2003, SCHÜTZ VASITEX has helped to reduce CO₂ emissions by more than 440,000 tonnes, which is equivalent to planting 20 million trees in an area ten times the size of Belo Horizonte, the sixth largest city in Brazil.

ENERGY-EFFICIENT SYSTEMS FOR UNDER-FLOOR HEATING IN EXISTING BUILDINGS

A new showroom presents refurbishment systems in a real apartment



We have opened a new showroom at our Ransbach-Baumbach site where we demonstrate how modern underfloor heating systems can be integrated into old buildings. The showroom is located in a former apartment which had been empty since the 1990s and has now been stunningly refurbished.

A glass panel in the floor shows how the screed has been milled.



The roughly 90-square-metre apartment on the upper floor of the office building complex was originally built in the 1970s. In keeping with construction standards at the time, the building was not insulated, the windows were only double-glazed and the roof was made of sheet metal. We began extensive renovation work in mid-2023. The ceiling was insulated with mineral wool and fitted with a vapour barrier to prevent moisture, the old windows were replaced with triple-glazed windows, and an underfloor heating system and living room ventilation system were installed to increase the energy efficiency. The niches where the old radiators had stood were bricked up. We also renewed the sanitary facilities, lined the entire flat with drywall panels

and installed the necessary understructure. Openings had to be made for the inflow and outlet lines of the heating pipes and for the ventilation ducts.

Making an old building energy-efficient

Installing underfloor heating was a core part of the renovation. Various systems were installed in the floor, walls and ceiling to demonstrate the different applications. In addition, a centralised ventilation system was installed using AIRCONOMY® system components. AIRCONOMY® system modules were installed in one room to provide floor-based air distribution and temperature control. AIRCONOMY® works as a combination of hot water underfloor heating and controlled ventilation with heat

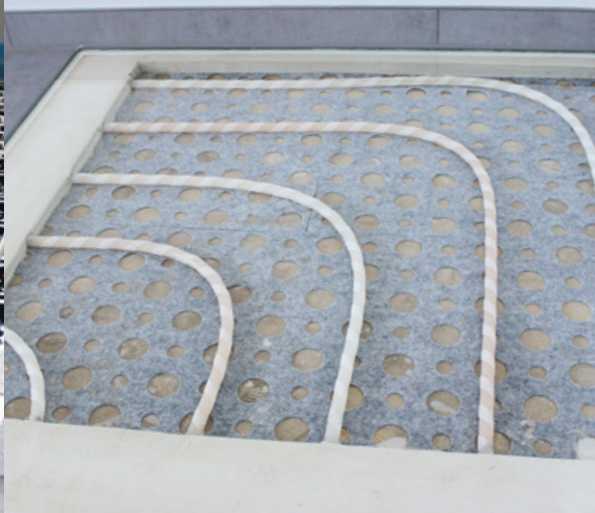


Thanks to a range of system solutions, it is now possible to install underfloor heating in existing buildings, either on top of existing screed without adding to the installation height, in the walls or under the ceiling.

Visualisation of the AIRCONOMY® system modules installed in the floor.



Another display case shows the Velcro fleece, which is laid directly on the existing screed.



The floor height after the screed was removed. The R50® renovation system was then installed.



recovery. In the other rooms, the installers fitted integrated supply air and exhaust air control via disc valves in the ceiling to ensure sufficient air exchange throughout the apartment.

There were a number of challenges that had to be taken into account during the planning phase, including the room layout, the load-bearing capacity of the ceilings, keeping the ceiling faces smooth, the condition and layout of the electrical cables, and the installation plans, including the installation shafts. The systems (floor, wall and ceiling heating) were planned in-house, while the underfloor heating systems were installed by our long-standing installation partners.

A systematic approach to underfloor heating in old buildings

Thanks to a range of system solutions, it is now possible to install underfloor heating in existing buildings, either on top of existing screed without adding to the installation height, in the walls or under the ceiling. In the showroom apartment, low-profile systems were chosen, including the R50® renovation system. Despite the low profile and a lower surface load, the system meets the standards of new builds thanks to the optimised thermal and impact sound insulation. A special Velcro fleece was used to install the underfloor heating on the existing floor, meaning that the additional installation height was only 14 millimetres. In another room, where the existing



Installation of wall heating
in the living area.



Another special feature
of the showroom is the
photovoltaic system
installed on the flat roof.

screed was also retained, we milled grooves in the screed, an approach which allows underfloor heating to be laid without adding to the overall floor height. **In addition to the underfloor heating, we also installed wall and ceiling systems. These systems are an excellent solution in old buildings, as they can be integrated as a drywall system with EPS thermal insulation or as a variant with clip rails.** The minimal installation height means that only a very small ceiling drop is required. All rooms can be heated and cooled with the installed systems, thanks to a special base module.

Glass panels in the rooms give visitors a detailed insight into the installed systems and their components. Visitors can also take a closer look at how the heating circuits, the control technology and the ventilation unit with the associated air ducts are connected in the control room. An oil heating system and a heating oil tank – both not connected to the system – are also on display and could theoretically be used as a hybrid system with a heat pump.

On the subject of heat pumps: an air-to-water heat pump has been installed on the outside wall. Among other things, this is needed to cool the water for the AIRCONOMY® cooling coil in the ventilation unit and is also used for temperature control. In the apartment, each room and each system can be regulated separately. Another special feature of the showroom is the photovoltaic system installed on the flat roof. Here we have set up three different orientation variants

for demonstration purposes. A total of 28 modules with an output of 11.34 kWp and a storage capacity of 10.2 kWh supply all the electricity needed in the apartment. The surplus energy is fed into the building grid and is used for the office building and production facility.

Our new showroom in Ransbach-Baumbach demonstrates how sophisticated system solutions and modern technologies enable energy-efficient air conditioning to be installed even in older buildings. The innovative heating and cooling systems, combined with a heat pump and a powerful photovoltaic system, offer a forward-looking and sustainable solution for building temperature control and can now be seen “at work” in our showroom.

Further information on the systems
can be found at www.schuetz-energy.net



A **NEW** ADDITION TO OUR PORTFOLIO

Ceiling temperature control for a pleasant indoor climate – at any time of year



Whether it's winter or summer, having a pleasant indoor climate shouldn't depend on the season. A range of modern interior heating and cooling solutions help when the temperature outside is swelteringly hot or frosty and cold. Ceiling temperature control is a solution that offers exceptional variability, allowing you to switch between heating and cooling depending on your requirements.

This highly efficient air conditioning system is not only suitable for new buildings but can also be used for renovations and listed buildings as it does not require complex installation work. The system is easy to install, even in rooms with low ceilings. The construction requires only 54 mm for the substructure and 10 mm as standard for the exposed ceiling. The system can also be installed as part of the existing ceiling construction, thus saving space.

Another advantage:

There are no unpleasant draughts. Unlike conventional radiators, the ceiling temperature control system does not heat the air, but emits radiant heat, distributing the warmth evenly throughout the room. Using the same principle, the air is cooled down by heat absorption. The result is a supremely pleasant indoor temperature. As it is compatible with heat pumps and solar energy, ceiling temperature control systems are exceptionally energy-efficient and also unbeatable in terms of sustainability and cost-effectiveness.

For more information visit www.schuetz-energy.net



MORE FLEXIBILITY THANKS TO HIGHER CAPACITIES:

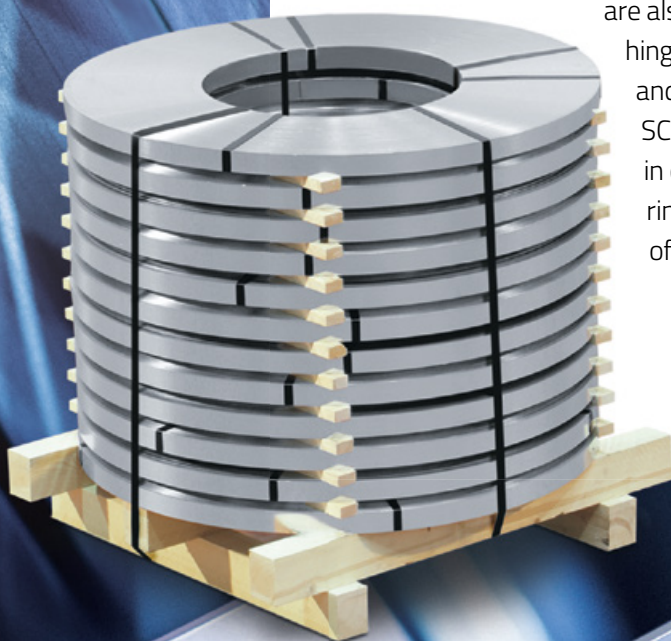
SCHÜTZ invests in a second slitting line in Siershahn

To create additional capacity and handle peaks in demand, our Steel Service Centre in Siershahn has been expanded to include a second slitting line and a new packaging line. This brings clear advantages for our customers: we can now operate even more flexibly for perfect order fulfilment and maximum supply security.

Up to 850 tonnes of flat steel are processed every day.

Our Steel Service Centre has recently added a second set of production rollers to its set-up. In a single operation, the two slitting lines produce precise slit strips with widths of 20 to 1,850 millimetres and thicknesses of 0.4 to 3 millimetres. A maximum of 40 parallel cuts are sufficient to process up to 850 tonnes of flat steel here every day.

The investment in an additional, redundant slitting line ensures that the demand for slit strips is covered at all times, both for internal processing and production for third parties. The slit strips manufactured here are used to make the steel grids for SCHÜTZ IBCs in our tube production facility in Selters and are also used by our customers to make hinges, stamped parts, assemblies and other steel components. SCHÜTZ manufactures the slit strips in customised slit strip widths and ring sizes to meet the requirements of a wide range of applications.



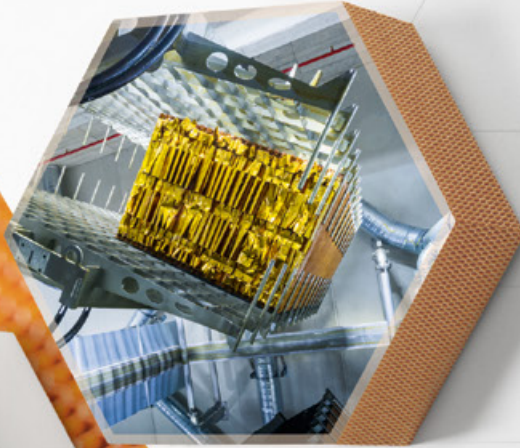
The 40,000-square-metre SCHÜTZ plant in Siershahn has its own railway siding.

Depending on the customer's requirements, the slit strips are packed vertically in bundles or horizontally on a pallet using the new packaging system connected to the slitting line. The high degree of flexibility in processing is also reflected in the number of spacers that are used during packaging. The customer can choose up to six per slit strip. Each coil is tied fully automatically with signode tapes through the centre. At the end of the packaging process, the coil and pallet are labelled with a weighing label containing all the important data for onward transport.

The 40,000-square-metre SCHÜTZ plant in Siershahn has its own railway siding for the delivery of coils weighing up to 35 tonnes and is located close to the motorway. The excellent transport links and our extensive expertise in steel processing are the basis that allows us to ensure such high quality and outstanding customer service. We have been manufacturing all steel components for our PACKAGING SYSTEMS and ENERGY SYSTEMS products in-house for more than 30 years. Since 2005, we have also been offering this service to external customers through our Steel Service Centres in Siershahn and Selters. Our present range includes coils, blanks and slit strips made from surface-finished, hot-rolled and cold-rolled sheet metal.

SAVE THE DATE

2025 4-6 March



JEC WORLD 2025

The Leading International
Composites Show

March 4-6  PARIS-NORD VILLEPINTE

SCHÜTZ at JEC WORLD

JEC WORLD is one of the world's leading trade fairs for composites. It brings together experts, innovators and companies from across the composites industry to showcase the latest technologies, products and trends. With numerous exhibitors, conferences and workshops, JEC WORLD is an unmissable event for anyone interested in the future of composites.

Visit us in Paris from 4 to 6 March 2025 and learn all about our latest premium solutions for composites. Together with our wide range of engineering and processing services, we offer you customised lightweight material solutions and maximum supply security.

Come and visit us in Hall 6, Stand E55.

Udo Schütz honoured with the Rudolf Diesel Medal for “Most Sustainable Innovation Achievement”

Udo Schütz has been honoured with the Rudolf Diesel Medal for his outstanding lifetime contribution to the field of sustainable packaging solutions. The company founder and owner of Schütz GmbH & Co. KGaA received the prestigious award in the “Most Sustainable Innovation Achievement” category. We warmly congratulate Udo Schütz on this honour in recognition of his significant achievements!



The Rudolf Diesel Medal is Europe's oldest innovation prize and has been awarded since 1953. The medal from the German Institute for Inventions honours personalities and companies that have made a significant contribution to improving the quality of life, prosperity and maintaining the culture of innovation in Germany. **Every year, a total of four winners receive the coveted medal in the categories “Most Successful Innovation Achievement”, “Most Sustainable Innovation Achievement”, “Best Innovation Promotion” and “Best Media Communication”.**

From the very beginning, SCHÜTZ has addressed the question of what happens to an IBC after it has been emptied.

The most recent German Innovation Award was presented on 4 July at an exclusive gala dinner at the MAN Museum in Augsburg in front of an audience of around 100 selected guests from the fields of industry and technology. One of the award winners

Using recycled material while offering the highest quality: this is a principle that Udo Schütz adopted and implemented many decades ago.

From the left: Veit Enders (member of the SCHÜTZ Management Board), Kurt Mehnert (tribute speaker and managing director of Mehnert Corporate Design GmbH & Co. KG), Udo Schütz (company founder and owner) and Thomas Schütz.



was Udo Schütz, who was honoured in the category of Most Sustainable Innovation Achievement. With the group of companies he founded in 1958, Udo Schütz has for many decades played a significant role in making the global use of packaging more sustainable. **With the development and design of the IBC in particular, Schütz demonstrated entrepreneurial vision and a sense of ecological responsibility – long before the Circular Economy Act was introduced in Germany.**

From the very beginning, SCHÜTZ has addressed the question of what happens to an IBC after it has been emptied. As part of our worldwide collection and reconditioning programme, the SCHÜTZ TICKET SERVICE, used IBCs are collected from customers, the steel grids are reconditioned and reused, the plastic inner bottles are replaced with brand-new containers suitable for the new application, and the old ones sent for material recycling. This means that 100% of the plastic material recovered from the collection process is used for new packaging solutions, which



makes a great contribution to saving resources.

SCHÜTZ is continuously expanding its expertise in the field of sustainable packaging solutions. **Initially, the recyclate was used primarily in pallets and corner guards; now it is now also being used to make IBC inner bottles and plastic drums thanks to our new GREEN LAYER technology. In the corresponding product variant, 30% recycled material is used to make the packaging.** As the recycled pellets are exclusively used for the middle layer, the use of recyclate does not compromise packaging performance or the protection of the quality of the contents. Using recycled material while offering the highest quality: this is a principle that Udo Schütz adopted and implemented many decades ago.

This degree of foresightedness is all the more astonishing given that at the beginning of his career Udo Schütz caused a sensation in a completely different area. In the 1960s, he ranked as one of the fastest sports car drivers and achieved numerous

successes, especially behind the wheel of a Porsche, notching up around 50 victories and titles at the 1966 Sports Car Championship and the 1969 Prototype World Championship, as well as being the first German to win the 1000-kilometre race at the Nürburgring in a Porsche 910 in 1967.

In the 1960s, he ranked as one of the fastest sports car drivers and achieved numerous successes, especially behind the wheel of a Porsche.

Even after his active time as a driver, Udo Schütz remained loyal to racing, but shifted to the water. He became a passionate deep-sea sailor and commissioned racing yachts which competed in major sailing competitions



The true strength of a company is always rooted in the product; the aim must always be to offer the most advanced and technically superior solution.

with great success. His many boats, all of which shared the name "Container", won many important sailing races between 1979 and 1993. His crowning achievement was winning the prestigious Admirals Cup with the German team in 1993.

However, Udo Schütz's undivided focus remains on the company he founded. From his hometown of Selters in the Westerwald region, he has built SCHÜTZ into an internationally leading and highly respected specialist for efficient and sustainable industrial packaging.

In everything he has done, he has remained true to his philosophy: the true strength of a company is always rooted in the product; the aim must always be to offer the most advanced and technically superior solution. Sustainability plays a decisive role in this, something that Udo Schütz recognised more than 50 years ago.

Winners of the Rudolf Diesel Medal 2024



Team spirit, exercise and community: our sporting year 2024

This year, SCHÜTZ again raised a flag for sportsmanship and community. Our employees competed in numerous events and demonstrated an incredible sporting spirit. Alongside athletic ambition and shared fun, the events were a great opportunity to meet colleagues from different departments and companies – and celebrate joint successes.





SCHÜTZ runs around the “Deutsches Eck”: the B2Run Koblenz

The B2Run company run in Koblenz, only 30 minutes away from the SCHÜTZ headquarters in Selters, is a permanent fixture in our annual sporting events calendar. Every year, around 15,000 amateur runners from a total of 596 small and large companies from the region take part. Traditionally, the run follows a 5.4 km route through Koblenz city centre, starting and finishing at the famous “Deutsches Eck”, where the Rhine and Moselle rivers meet.

The race kicks off from 5 pm, with the runners starting in nine staggered blocks. We were represented by 135 highly motivated colleagues whose team motto was “Get there faster – start your career now”. For the SCHÜTZ team, the focus was on both sporting ambition and the shared experience, as well as the sheer enjoyment of the event itself. There was a special achievement among the SCHÜTZ athletes, with one runner completing the distance in a personal best time of 22 minutes.

After the exertion came the reward: the big after-run party was the ideal setting to raise a glass to the sporting achievements and enjoy live music, DJ sets, cool drinks, and the chance to celebrate with contestants from other companies.



Eyes on the cup in Selters: the SCHÜTZ Cup 2024

On 6 July 2024, the SCHÜTZ Cup took place, a football tournament organised by the Works Council with a total of ten teams competing for the coveted trophy. As well as sporting prowess, the teams also excelled in their imaginative choice of names. At the end of a tournament of exciting matches, the MX Allstars came out in top place, followed by Korallenzucht FC in second place and Rep. United in third place.

The sports field in Selters was seamed by spectators, enjoying the glorious sunshine and enthusiastically cheering on the teams. After so much fun, it is clear that the SCHÜTZ Cup will go into the second round next year, with the reigning champions hoping to defend their title.



SCHÜTZ Benelux runs for a good cause: the ASML Marathon Eindhoven

SCHÜTZ Benelux again demonstrated its sporting spirit this year at the ASML Marathon in Eindhoven, the largest sporting event in the province of North Brabant. Four highly motivated colleagues signed up for the 21.1 km half marathon event. With impressive commitment and stamina, all SCHÜTZ runners completed the course. The great atmosphere and the excellent course made for an unforgettable experience for both runners and spectators.

As well as the sporting fun, the ASML Marathon Eindhoven was dedicated to a good cause. Under the motto "Run against cancer", donations were collected for the Dutch Cancer Society (KWF Kankerbestrijding). The team had an amazing time competing in the event and we are delighted to actively support this important initiative.



schneller ANS ZIEL!



SCHÜTZ France on a cross-country run through woods and fields: Les Foulées de Courtaboeuf

SCHÜTZ France was also out and about again this year, and again took part in the Les Foulées de Courtaboeuf in Villebon-sur-Yvette near Paris. This company run, which brings together companies from the Courtaboeuf region, took place for the 25th time and attracted a total of 800 participants, including 18 colleagues from SCHÜTZ. Les Foulées de Courtaboeuf stands for more than just sporting performance. Those who take part become part of an enthusiastic community with a shared love of exercise. Teams from SCHÜTZ France have regularly participated in this event since 2010.



This year, the weather was perfect: sunny, but not too hot. The event offers something for everyone, from a real challenge to a more relaxed approach: participants could choose between a 5-kilometer and a 10-kilometer run or a 4-kilometer walk. The varied course led through woods and meadows with ascents and descents, making for an exciting race.

From Koblenz to Eindhoven to Courtaboeuf: our teams mastered every sporting challenge with enthusiasm and incredible team spirit – promising to return next year.

SCHÜTZ has been driving smoothly with Autohaus Krah for 40 years

This year, SCHÜTZ and Autohaus Krah celebrate a special anniversary: 40 years of close cooperation. It's a partnership that began in 1984 and is a wonderful example of joint growth and mutual support between two 'neighbours'.

As a globally operating company, mobility is essential for SCHÜTZ, especially for staff in customer service and sales, who cover many kilometres every year. Keeping us in the driving seat takes the services of a dependable partner to handle all the ordering, delivery, inspections and repairs of company cars and commercial vehicles or even organising replacement vehicles at short notice. For SCHÜTZ at its headquarters in Selters, for the past 40 years this partner has been Autohaus Krah from Herschbach in the Westerwald region of Germany.

From the very beginning, the dealership specialised in Volkswagen and Audi vehicles. Founded in 1960 by Theresia and Josef Martin Krah, the company has been managed by their son, Wolfgang Krah, since 1992. He had initiated the business relationship with SCHÜTZ eight years earlier. Wolfgang Krah had known the Schütz family personally since his youth, especially the sons of company founder Udo Schütz, who lived in the neighbouring village. This proximity still forms the basis for the ongoing and successful partnership.



Udo Schütz (on the left) with Wolfgang Krah

"Getting the order from SCHÜTZ back then was a milestone for our dealership and also an incentive for me personally to provide the best possible service quality," recalls Wolfgang Krah. In the first few years of the partnership, he personally took care of every order and every vehicle reconditioning or repair. "Back then, SCHÜTZ was a medium-sized company, but the development and growth were impressive, and still are." Initially, SCHÜTZ ordered Audi cars for its administrative staff. However, demand

quickly increased from other departments as well. Over the years, several hundred vehicles have been ordered and serviced, including commercial vehicles by VW, such as Caddies, vans and Crafters, all of which were deemed robust enough to keep up with SCHÜTZ's demanding work requirements.

Rapid assistance even in exceptional situations

SCHÜTZ set the highest standards for the quality and reliability of its vehicles, which are indispensable in daily use. Thanks to the proximity – “We can be on site in five minutes,” says Krah – the dealership has always been able to offer an excellent service. Even in exceptional cases, such as accidents or damage caused by third parties, Wolfgang Krah has personally taken care of repairs, sometimes working spontaneous night shifts. There were many moments when the close relationship between the two companies was put to the test – and Krah's fast and dependable service saved the day, leaving a lasting impression on SCHÜTZ.



“Getting the order from SCHÜTZ back then was a milestone for our dealership and also an incentive for me personally to provide the best possible service quality,” recalls Wolfgang Krah.

In addition to providing and maintaining the vehicles, Autohaus Krah also offers a comprehensive array of services for SCHÜTZ: vehicles are collected, serviced and returned, and replacement vehicles are provided if required. Also, all SCHÜTZ employees benefit from a “SCHÜTZ discount” at Autohaus Krah. The flexible and customer-centric approach has played a major role in ensuring that the partnership continues to this day.

A partnership that has driven the growth of both companies

Supplying and supporting SCHÜTZ was an important milestone for Autohaus Krah. “I have seen SCHÜTZ grow over the decades,” says Wolfgang Krah. “And we have also developed well, even if you can't quite compare the growth of our two companies,” says Krah with a twinkle in his eye. The close collaboration has not only brought prestige to the Krah's company, it has also shaped its development.

The dealership's new building in 2013 was planned and co-designed by Thomas Schütz, architect and the son of Udo Schütz. The car dealership itself also benefits from SCHÜTZ's advanced technologies: the air conditioning in the offices, for example, is provided by the AIRCONOMY® system by SCHÜTZ ENERGY SYSTEMS, which further emphasises how much each side appreciates and trusts the other's work. “We really, really like this system, and I can recommend it unreservedly,” says Wolfgang Krah.

Challenges and the future

The high quality and service expectations that SCHÜTZ has for its fleet have always been met with great commitment. In today's world, with much longer delivery times for vehicles and especially commercial vehicles, providing outstanding service continues to be a top priority for the car dealership. Despite occasional challenges, Autohaus Krah has always been able to react flexibly and fulfil special requests at short notice.

Wolfgang Krah is passing this service vision to the next generation, just like his parents passed it on to him. His daughter Alina joined the team in 2014, and Felix, his son, joined the family business this year. Both make a significant contribution to the further development of the dealership and support the ongoing good relationship with SCHÜTZ.

A wide range of vocational training options with glowing prospects

SCHÜTZ's success is based above all on the commitment and dedication of our employees, and our vocational training programme plays a decisive role. We continuously promote young talent and offer youngsters a wide range of career opportunities and exciting prospects for the future.

Qualified specialists are truly essential for SCHÜTZ's continuous development. This is why we are constantly investing in our in-house training programmes and attach great importance to taking on our talented employees after they graduate, and keeping them in the company long term.

On 10 July 2024, 19 graduates from the different training fields were honoured at a ceremony. The event, attended by the management, the head of the HR department and the training officers, was followed by an informal get-together with snacks in our SCHÜTZ Training and Career Forum (AKF).

SCHÜTZ
#besserausgebildet

Our warm congratulations to:

2 INDUSTRIAL CLERKS
4 INDUSTRIAL MECHANICS
3 PROCESS MECHANICS
1 IT SPECIALIST IN APPLICATION DEVELOPMENT
1 CONSTRUCTION MECHANIC
1 DIGITALISATION MANAGEMENT CLERK



3 METAL TECHNOLOGY SPECIALISTS
1 WAREHOUSE LOGISTICS SPECIALIST
3 WAREHOUSE SPECIALISTS



Five of our trainees were awarded the **top grade of 'very good'** as their final result. We are particularly proud and impressed by the performance of one new graduate in the field of industrial mechanics, specialising in maintenance: **Lars achieved an incredible result of 98 per cent despite taking the exam early!**

The SCHÜTZ Training and Career Forum

is where we shape the future and discover talent!

Here, everything revolves around the topics of vocational orientation and career planning. Regular events such as counselling sessions, project days, workshops and factory tours give students the opportunity to find out about career opportunities at SCHÜTZ.



The next generation of SCHÜTZ apprentices has just embarked on their journey.

On 1 August, 51 young people started their apprenticeships with us. We welcomed them with the 7-day 'Welcome Days' event to give them the perfect start to their training. During this introductory week, the new trainees are able to familiarise themselves with the company structures and make their first contacts. The clear focus of the event is on getting to know each other and team building. **For the first time, three apprentices in wholesale and foreign trade management have started at our plant in Ransbach-Baumbach, where they will be learning all about the ENERGY SYSTEMS division. Here, everything revolves around innovative building and home technology systems, including products such as our heating oil storage systems, underfloor heating systems, photovoltaics and our energy-saving AIRCONOMY® system for heating, ventilation and cooling.**

Apprenticeships and dual study programmes

SCHÜTZ is one of the largest companies providing vocational training in Rhineland-Palatinate. We have been offering a wide range of apprenticeships and dual study programmes for over 50 years. With more than 30 different vocations, we lay the foundation for our youngsters' professional future. In addition to technical training, we support our apprentices with additional factory lessons and English classes plus internal and external exam preparation courses. After completing their apprenticeship, we offer a wide range of further training programmes to help our employees develop and flourish.



MINI-INTERVIEW: Four questions for Sophie

We chatted to our former apprentice Sophie, who recently graduated as an industrial clerk and now works in our HR department. In this interview, Sophie gives us an insight of what her apprenticeship at SCHÜTZ was like.

How was the start of your apprenticeship at SCHÜTZ?

"The start was really well organised, and it was great fun from the very beginning. Everyone was so nice and welcomed us apprentices with open arms. In the first few days, there were a variety of activities and team games that made it easier for us to get to know each other."

What did you think of your apprenticeship as a whole?

What I particularly liked was that the whole commercial apprenticeship is geared towards finding your own 'target' department – and that at the end you get to work in the department you enjoyed most and where your strengths are best





utilised. You spend the last six months before the end of your training in the department of your choice. This gives you a great opportunity to familiarise yourself with your future workplace. I also really liked the fact that we received factory training during the apprenticeship and were specifically prepared for the intermediate and final exams in preparation courses.

And how do you like working in your present department?

“I’m very happy here, and I’m glad I chose the HR department. The people I work with are very helpful and I continue to get all the support I need. We’re already discussing further training options. Overall, I’m very happy with my choice.”

What advice would you give new apprentices?

“Keep an open mind and tackle every challenge with a positive mindset; always do your best. During your apprenticeship, you’ll build up a network and get to know lots of great people.”

What makes our apprenticeships special?

What do our apprentices learn?

What career opportunities do we offer?

We share exciting insights into the world of training at SCHÜTZ on Instagram. **#TeamSCHÜTZ**

SCHÜTZ
#besserausgebildet



FOLLOW US!





CELEBRATING LOYALTY: **SCHÜTZ** honours 71 long- standing employees

In an age in which dedication and loyalty are increasingly valuable assets, it is the people who have been with SCHÜTZ for decades who form the foundation of our success. This year, we are honouring no fewer than 71 employees for their outstanding loyalty. Eight of them have been with us for 40 years.

Honouring our long-standing employees with a special celebration is a tradition firmly anchored in SCHÜTZ's corporate culture. This year, it was our pleasure to raise a glass to our long-serving employees at an official ceremony. Together with our company founder Udo Schütz and CEO Roland Strassburger, we looked back on impressive careers and personal stories that are closely intertwined with the development of our company.

The guests of honour were celebrated at a festive champagne reception. Over dinner, there were plenty of opportunities to reminisce about old times and share anecdotes and experiences. One of the highlights of the evening was a film produced especially for the occasion with the jubilarians, which provided insights into the various activities of the honourees and showed how the departments work seamlessly together to make a finished, market-ready product at the end of the day.



The dedication and loyalty of our many long-standing colleagues fills us with pride, and it deserves the highest recognition. These individuals have lived our values for decades and have made SCHÜTZ what it is today. On behalf of the entire SCHÜTZ team, we would like to thank all those celebrating their anniversaries from the bottom of our hearts.



Grow with us on LinkedIn!

LinkedIn is the leading social network for the professional and corporate world. Here you can get the latest information about SCHÜTZ and also benefit from valuable insights into our industry. Visit our company page and network with us and other professionals.

What can you expect on our LinkedIn profile?

The latest news:

Be the first to hear about our new products, innovations and exciting projects.

Industry insights:

We regularly share articles and information on topics relevant to our industry, such as sustainability, quality and product safety.

Career opportunities:

Discover exciting job offers and find out more about career opportunities at SCHÜTZ.

Behind the scenes:

Look forward to exclusive insights into our day-to-day work, our corporate culture and our employees.

Here's how to be part of our network!

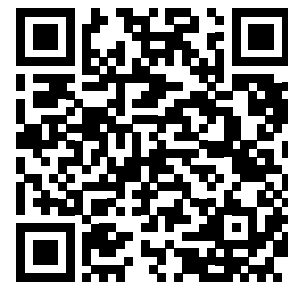
1. Follow us on LinkedIn: visit our LinkedIn page and click on 'Follow'. This will keep you up to date!
2. Share our content: if you like our posts, share them in your network. This helps us reach even more people.
3. Interact with us: comment on our posts, ask questions and share your perspective. Your feedback is important to us!



LinkedIn

Let's grow together!

We are proud of our SCHÜTZ community and want you to be an active part of it. Let's grow together and learn from each other! We value your commitment and support and greatly look forward to seeing you on LinkedIn and discussing exciting topics with you!



Join now and follow us.